

# The antihyperlipidemic activity of *Apis dorsata* Binghami nesting extract in atherogenic diet- induced hyperlipidemic rats

*by* Mokosuli Yermia Samuel

---

**Submission date:** 25-Aug-2019 03:08AM (UTC-0700)

**Submission ID:** 1163133305

**File name:** ting\_extract\_in\_atherogenic\_diet-induced\_hyperlipidemic\_rats.pdf (312.84K)

**Word count:** 3911

**Character count:** 21224



## The antihyperlipidemic activity of *Apis dorsata* Binghami nesting extract in atherogenic diet-induced hyperlipidemic rats

Mokosuli Yermia Samuel<sup>1\*</sup>, Revolson Alexius Mege<sup>2</sup>, Gianni Versya<sup>3</sup>, Christny Rompas<sup>4</sup>

<sup>1</sup>Laboratory of Bioactivity and Molecular Biology, Faculty of Mathematics and Natural Science,

State University of Manado, Tondano, Indonesia

<sup>1, 2, 4</sup>Departement of Biology, Faculty of Mathematics and Natural Science, State University of Manado, Tondano, Indonesia

<sup>2</sup>Research and Community Institututi, State University of Manado, Tondano, Indonesia

<sup>3</sup>Undergraduate student, <sup>1</sup>Departement of Biology, Faculty of Mathematics and Natural Science, State University of Manado, Tondano, Indonesia

### Abstract

*Apis dorsata* Binghami is one of the endemic species of Sulawesi, Indonesia. *Apis dorsata* Binghami has not yet been cultured, but produces more honey and is richer in secondary metabolites than *Apis mellifera*. Empirically, the people of Minahasa, North Sulawesi, Indonesia have long been using honey bee nest as medicine. Research has been conducted to determine the antihyperlipidemic activity of infusion extract of *Apis dorsata* Binghami nest. *Apis dorsata* Binghami nest has obtained from natural forests, Minahasa, North Sulawesi, Indonesia. Extraction was done by the infusion method. Antihyperlipidemic analysis using pathogen free white mice. Blood lipid profiles measured were total cholesterol, low-density lipoprotein (LDL) and triglycerides. This study used a completely randomized design with five treatments and three replications. Data from the study were analyzed variance. The results of this research showed that the treatment of 5% and 10% infusion extract *Apis dorsata* Binghami nest, significantly reduce total cholesterol, LDL and rat blood triglycerides. Further research on the antihyperlipidemic activity of *Apis dorsata* Binghami nest extract has the potential to produce antihyperlipidemic herbal drugs.

**Keywords:** *Apis dorsata* Binghami, nest, antihyperlipidemic

### Introduction

Sulawesi Island is a biogeographic transition area for Asian and Australian flora and fauna (Hadisoesoilo 2001; Mokosuli, 2013)<sup>[11, 22]</sup>. One of Sulawesi's endemic species are giant forest honey bees, *Apis dorsata* Binghami. This honey bee was studied and reported by Alfred Russel Wallace in the 18th century (Otis 1991; Raffiudin, 2002; Mokosuli, 2013)<sup>[30, 22]</sup>. *Apis dorsata* Binghami has yet to be cultivated, living naturally in the forests of Sulawesi (Otis 1991; Hadisoesoilo 2001)<sup>[11]</sup>. However, *Apis dorsata* Binghami produces more honey than *Apis mellifera*. In addition, the diversity of plant sources of nectar, pollen, and propolis *A. dorsata* Binghami is higher than *A. mellifera* (Hadisoesoilo 2001; Mokosuli, 2013)<sup>[11, 22]</sup>. Previous research has been carried out, it is known that *Apis dorsata* Binghami worker bees visited more than 700 plant species. *Apis dorsata* makes some Sulawesi endemic plants a source of nectar, pollen and propolis. Sulawesi endemic plants as a source of nectar and pollen include *Ficus minahasae*, *Elmrelelia celebica* L. and *Lansium minahase* L. (Mokosuli, 2013)<sup>[22]</sup>.

Bioactive research from *Apis dorsata* Binghami for the purpose of utilizing the pharmaceutical field has not been widely used. Bioactive research from *Apis dorsata* Binghami that has been done is an analysis of antioxidant activity of bee venom (Mokosuli et al., 2013)<sup>[22]</sup>, analysis of anticancer and antibacterial activity of bee venom (Mokosuli et al., 2016)<sup>[22]</sup>; analysis of antioxidant activity of ethanol extract of *Apis dorsata* Binghami nest (Mokosuli et al., 2018)<sup>[24]</sup>. Nevertheless, there have not been reports of

research on the utilization of *A. dorsata* Binghami nest as a bioactive source of drugs for diseases caused by hyperlipidemia conditions.

Honey bees produce several important products that are very beneficial for human life. Natural products produced by honey bees include honey, royal jelly, bee pollen, beeswax, bee venom and propolis (Sawaya et al. 2009; Chen et al., 2018)<sup>[35, 40]</sup>. The product is a complex biomolecule that is very rich in secondary metabolites because it is sourced from hundreds or even thousands of plants around the honeycomb. Honey bee nest is specific according to its habitat so that it has the potential to find medicinal bioactive (Raffiudin, 2002; Mokosuli, 2013)<sup>[30, 22]</sup>.

Honey bee nest is a structure used by bees as a place of refuge for colonies from attacks of bacteria, fungi, viruses, and predators (Kumazawa et al., 2004; Raffiudin, 2002)<sup>[19, 30]</sup>. The inside of the nest is a collection of hexagonal structures made of wax and propolis compounds. Honey bee nest are used to store honey, pollen, bees, eggs, larvae, and pupae of bees. *Apis dorsata* nests in the form of a single comb are found in an open place, with a large size, the area can reach 1-1,5 m<sup>2</sup> (Mokosuli, 2013; Hadisoesoilo, 2001)<sup>[22, 11]</sup>. The bioactive composition of nest is very dependent on the types of plants that are food sources (Sawaya et al., 2009)<sup>[35]</sup>.

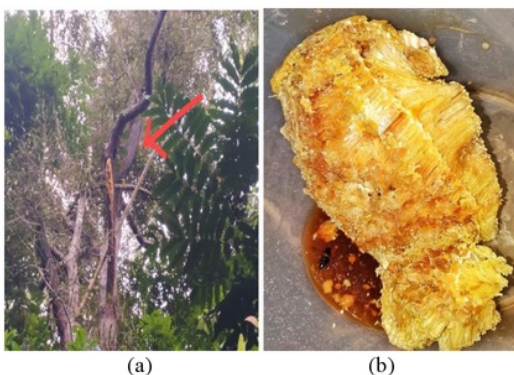
Empirically, the people of Minahasa, North Sulawesi, Indonesia have used *Apis dorsata* nest as degenerative medicine. Interviews conducted (n = 50) in people aged 40-65 years in Minahasa were found that beehives consumed

directly and boiled could reduce blood lipid content. However, there have been no research reports on the antihyperlipidemic activity of *Apis dorsata* Binghami honeycomb extract. On the other hand, the prevalence of diseases caused by hyperlipidemia in Indonesia is high (BPPS, 2019). Furthermore, many heart diseases and strokes caused by the condition of hyperlipidemia are still diseases with the highest mortality rates in the world today (WHO, 2019). Exploration of new bioactive source that have antihyperlipidemic activity is very necessary. Research has been conducted to determine the antihyperlipidemic activity of *Apis dorsata* Binghami nest extract.

## Materials and Methods

### Sample collection

*Apis dorsata* Binghami's nest was obtained directly in the Minahasa forest, North Sulawesi, Indonesia. The analysis was carried out in the bioactivity and molecular biology laboratory, department of biology, state university of Manado.



**Fig 1:** (a). *Apis dorsata* Binghami nesting at Raringis forest, Minahasa, North Sulawesi, Indonesia. (b). *Apis dorsata* Binghami nest.

24

### Animals

The test animals used were white rats (*Rattus norvegicus*) pathogenic free. Before being used in research, rats were adapted for 7-14 days. In the adaptation stage, the rat was given standard feed. The rat used were healthy with an average body weight of 230 gr.

### Methods

#### Simplisia preparation from *Apis dorsata* Binghami nest

*Apis dorsata* Binghami nest samples obtained were air dried for 3 days at room temperature. The nest was blended to form a powder. The powder was stored in a sterile plastic container and stored in the refrigerator.

#### Preparation of *Apis dorsata* Binghami nest infusion extract

*Apis dorsata* Binghami nest powder is used for making infusion extracts. Each of 5 grams and 10 grams of powder is boiled with distilled water for 15 minutes, at a temperature of 80°C. The results of the decoction were filtered using filter paper. Furthermore, the filtrate obtained was called *Apis dorsata* Binghami nest infusion extract. The infusion extract was made when it was given to the test mice.

#### Induced hyperlipidemia

The high-fat feed used to induce hyperlipidemia consists of

a mixture of chicken egg yolks, quail egg yolks, fine corn, pellets, and beef fat. The feed has made by heated beef fat and then quail egg yolks, fine corn, pellets and mixed evenly. This study used a completely randomized design, carried out in five treatment groups. Each treatment consisted of three test rats (Table 1.)

**Table 1:** Experimental design

Group	Replication	Treatment
N	3	Feed standard 15-20 gr / day and drinking water with ad libitum.
K+	3	Feeded with 15-20 grams of hyperlipidemia induction feed / day for 30 days, after which simvastatin was given for 7 days.
K-	3	Feeded with 15-20 gr hyperlipidemia induction feed / day for 30 days.
P1	3	Feeded with 15-20 grams of hyperlipidemia induction feed / day for 30 days, after which the nest infusion extract was given for 7 days.
P2	3	Feeded with 15-20 grams of hyperlipidemia induction feed / day for 30 days, followed feeded <i>Apis dorsata</i> Binghami nest infusion extract was given for 7 days.

### Evaluation of antihyperlipidemic activity

Rat for normal control was only given standard feed and drinking water, while the negative control group rats were given high-fat feed for 30 days. The positive control group was given high-fat feed for 30 days after which it was followed by standard feeding and simvastatin for 7 days. The dose I test group was given a high-fat diet for 30 days, after which it was followed by the provision of standard food and 5 g / kg body weight honey bee nest infusion extract for 7 days. The test group dose II was given high-fat feed for 30 days, after which it was followed by administration of standard food and 10 gr/kg honey bee nest infusion extract for 7 days.

### Analysis of lipid profile

Measurements of blood lipid levels were carried out three times: after adaptation, after induction of hyperlipidemia and after induction of infusion extract of *Apis dorsata* Binghami nest. The parameters measured were levels of total cholesterol, low-density lipoprotein (LDL) and triglycerides in the blood. Rat blood was taken through the tail, before taking rat blood was cleaned with alcohol. The tail of the mouse has cut with sterile scissors until it bleeds out. The blood coming out has taken using a blood spoon, then dropped on the test strip on the Lipid Pro tool.

2

### Statistical analysis

The results of the study were expressed as mean ± S.E. Data was analyzed by using one-way analysis of variance test (ANOVA) followed by the Least Significance Different test for multiple comparisons. Values with  $p < 0.05$  were considered as significant. Statistical analysis was used SPSS IBM 20.

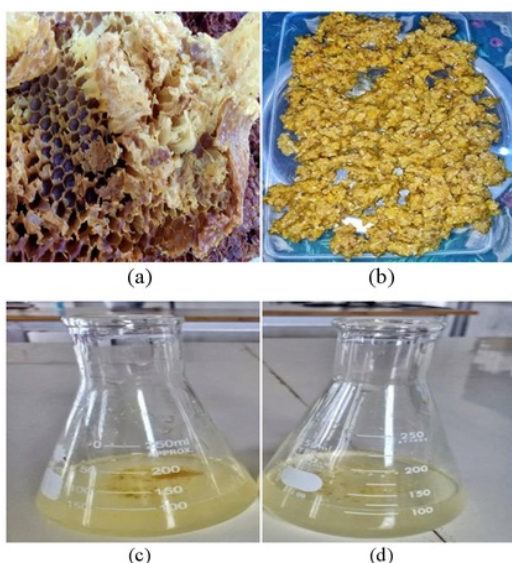
### Results and Discussion

#### The infusion extract of *Apis dorsata* Binghami nest

The nest of *Apis dorsata* Binghami was obtained from the Minahasa region, North Sulawesi, Indonesia. The color of the nest was golden yellow. The nest used has around 30 days old. Honey and nest were clove-flavored, due to the large number of cloves that bloom around the nest of *Apis*



*dorsata* Binghami. The nest infusion extract was light yellow, both extracts with a concentration of 5% (P1) and 10% (P2). Nevertheless, the extract of P2 was more yellow than the extract of P1 (Figure 2).



**Fig 2:** a. *Apis dorsata* Binghami nests from Minahasa b. The nest after drying and smoothing c. Infusa extract 10%. d. Infusion extract 5%.

#### Blood lipid levels of rats before and after giving induction of hyperlipidemia feed.

The average total cholesterol content of white rats measured by auto check was below 100 mg/dl, both in positive controls, normal and treatment groups (Appendix 1). After the treatment of induction of hyperlipidemia, there was an increase in lipid levels in the blood of white mice. The highest total cholesterol level in P2 group was 224 mg/dl; the highest triglyceride level in the K-group was 236 mg/dl, while the highest LDL level in the P2 group was 166 mg/dl (table 4.).

**Table 4:** Average rat lipid levels after administration of hyperlipidemia induction feed.

Group	Lipid profile		
	Total cholesterol	Trigiserida	LDL
*N	104,67	105,67	35,33
K+	193,67	227,67	144,67
K-	217,33	236,00	143,00
P1	217,33	226,33	157,67
P2	224,00	227,33	166,00

\*No treatment for hyperlipidemia induction feed was given.

#### Blood lipid levels of rats after administration infusion extract of *Apis dorsata* nest

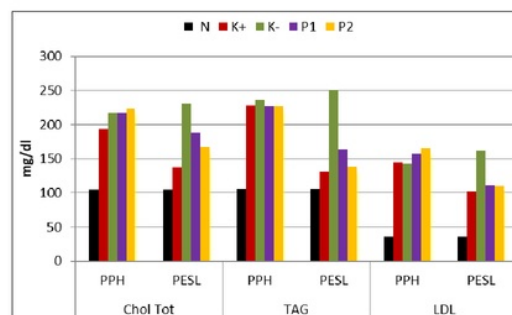
The highest total cholesterol level was found in the K-group was 231, 33 mg/dl, while the lowest in the P2 group was 104.67 mg/dl. The highest triglyceride level in the K-group was 251 mg/dl, while the lowest in the N group was 105.67 mg/dl. The highest LDL level in the K-group was 162 mg/dl while the lowest in the N group was 35, 33 mg/dl. The average total cholesterol, triglyceride, and LDL in the infusion extract of *Apis dorsata* nest treatment group (P1 and P2) were still better than the negative controls (Table 5

and Figure 3).

**Table 5:** Average rat blood lipid levels after administration of infusion extract of *Apis dorsata* Binghami nest (mg / dl).

Group	Lipid profile		
	Total cholesterol	Trigiserida	LDL
*) N	104,67	105,67	35,33
*) K+	137,33	131,33	101,67
*) K-	231,33	251,00	162,00
P1	188,33	163,67	111,33
P2	167,00	138,33	110,67

\*No treatment for hyperlipidemia induction feed was given.



**Fig 3:** Histogram of blood lipid profile of test rats.

Description Feeding induction of hyperlipidemia (PPH), Application of infusion extract of *Apis dorsata* nest (PESL), Normal control group (N) not given induction of hyperlipidemia feed (N), Positive control group, administration of simvastatin (K+), negative control group (K-), test group, administration 5 gram of infusion extract *Apis dorsata* Binghami nest (P1), test group, administration 10 gram of infusion extract *Apis dorsata* Binghami nest (P2).

The results of analysis of variance showed that there was an effect of infusion extract of *Apis dorsata* Binghami nest on total cholesterol, triglyceride and LDL levels ( $p > 0.05$ ) (Appendix 2). Because the treatment of infusion extract significantly affected the three parameters of lipids measured, it was followed by the LSD test.

The results of the LSD test for the parameters of rat blood cholesterol levels showed that the K-group significantly different from the P2 and K + groups ( $p > 0.05$ ). In the group, P1 showed a significant difference with the K-group ( $p > 0.05$ ). Group P1 showed a significant difference with the P2 group. The K + group did not show a significant difference with the P2 group ( $p > 0.05$ ) (Table 5). The results of the LSD test for triglyceride parameters, K-group differed significantly from group P1, P2 and K + groups ( $p > 0.05$ ). P2 group did not show significant differences with groups P1 and K + ( $p > 0.05$ ). The LSD test results for LDL parameters, K + group differed significantly from K + group, group P1 and group P2 ( $p > 0.05$ ). Group P1 and group P2 were not significantly different from group K + ( $p > 0.05$ ).

#### Discussion

The application of 10% infusion extract *Apis dorsata* Binghami nest (b/v) showed a decrease in total cholesterol, triglycerides, and LDL. The application of 5% infusion extract has not significantly affected total cholesterol but has a significant effect on LDL and triglycerides. However, the K + group that used the standardized drug Simvastatin (Kalbe Farma), had a lower average cholesterol level

(137.33 mg/dl) compared to P2 (167.00 mg/dl).

Based on the content analysis of phytochemical groups, the ethanol extract of *Apis dorsata* Binghami nest from Minahasa contains flavonoids (+++), 18 aloids (+), steroids (++) , triterpenoid (++) . Furthermore, based on the results of HPLC analysis and UV Vis spectrophotometer, it was known that the ethanol extract of *Apis dorsata* Binghami honeycomb from Minahasa contained 20 types of flavonoids (Mokosuli et.al. 2018)<sup>[24]</sup>. Analysis of the content of phenol compounds with a UV Vis spectrophotometer found 1 types of phenolic compounds in the ethanol extract of *Apis dorsata* Binghami nests from Minahasa, North Sulawesi, Indonesia (Mokosuli et.al. 2018)<sup>[24]</sup>. However, the composition of the bioactive content in honey bee nest depends on the type of honeybee, plant biodiversity and geographical location (Sawaya et.al. 2009; Mokosuli, 2013)<sup>[35, 22]</sup>. In this study, *Apis dorsata* Binghami nest from Minahasa has a distinctive aroma, namely the aroma of cloves. This means that many worker bees visit and take nectar, plant resins (propolis) and pollen from clove plants around their nests. Honey bees are composed of biomolecules of wax, propolis, royal jelly, pollen, and honey. Each of these biomolecules contains specific compounds and has been studied with many medicinal properties. Flavonoids found from honey bee nest in this study are thought to originate from propolis. Propolis is a resin with a mixture of bee enzymes, essential oil, organic minerals, candles, and honey. Propolis 17 the main type of flavonoids from honey bee propolis (Chen et. Al. 2018; Kumasawa 5 al. 2004; Sawaya et. al. 2009)<sup>[5, 35]</sup>. Flavonoids play a role in 4 reducing blood cholesterol levels by reducing the activity of HMG-CoA reductase, decreasing the activity of the enzyme acyl-CoA cholesterol acyltransferase (ACAT) and reducing the absorption of cholesterol in the digestive tract. The 9 ability of anti-hyperlipidemic honey bee propolis plays a role in reducing the risk of cardiovascular disease and other complications of the disease (Rumanti, 2011)<sup>[32]</sup>. Fla 16 oids can inhibit LDL oxidation in blood vessels (Orsolice et al. 2019; Miura et al., 2000; Zhu et. al. 2000)<sup>[29, 25, 40]</sup>. In previous studies, it was known that crude extract of *Apis dorsata* Binghami nest from Minahasa had strong DPPH free radical scavenger activity (IC50: 6.69 mg / L) compared to the positive control of vitamin C (IC50: 6.73 mg / L) (Mokosuli et.al. 2018)<sup>[24]</sup>. In addition to flavonoids, steroid phytochemical groups can mimic cholesterol in the formation of lipoprotein and kilomicon. This can cause a decrease in blood cholesterol content (Kumar and Devanna, 2016). Saponins can bind LDL cholesterol to blood vessels, thus preventing the process of atherosclerosis (Mokosuli, 2008)<sup>[24]</sup>. Honey bee nest extract of *Apis dorsata* Binghami contains high intensity saponins and steroids.

### Conclusion

The nest infusion extract of *Apis dorsata* Binghami has antihyperlipidemic activity. The P2 extract (10%) has a greater effect on the reduction of total cholesterol, LDL and triglycerides than the P1 extract (5%).

### Acknowledgment 1

Presented thanks to the directorate of research and community service, the ministry of research, technology, and higher education, the Republic of Indonesia, which has been finance this research through basic research skim in

State University of Manado.

### References

1. Abdi R. Flavonoid Struktur, sifat antioksidatif dan peranannya dalam sistem biologis. J. Belian, 2010, 9(2).
2. Abdulbasit, Oladayo, Olamide, Olasile, Babatunde, Gbolahan. Effect Nigerian Propolis on Glycemia, Lipid Profile, and Oxidative Stress Markers in Alloxan-Induced Diabetic Rats. PHOL. 2013; 2:149-158.
3. Bankova VS, de Castro SL, Marcuccic MC. Propolis recent advances in chemistry and plant origin. Apidologie. 2000; 31:3-15.
4. Bankova V, Trusheva B, Popova M. New developments in propolis chemical diversity studies (since 2000). Scientific evidence of the use of propolis in ethnomedicine, 2008, 1-13.
5. Chen LH, Chien YW, Chang MH, Hou CC, Chan HC, Tang HW, Huang HY. Taiwanese Green Propolis Ethanol Extract Delays the Progression of Type 2 Diabetes Mellitus in Rats Treated with Streptozotocin/High-Fat Diet. Nutrients. 2018; 10(4): 503. Published online 2018 Apr 18. doi: 10.3390/nu10040503.
6. Dirjen POM. Farmakope Indonesia edisi III. Jakarta Departemen Kesehatan RI, 1979.
7. Dyer FC. Nocturnal orientation by the asian honey bee, *Apis dorsata*. *Animal Behavior*. 1985; 33:769-774
8. Engel MS. The honey bees of Indonesia (Hymenoptera: Apidae). *Treubia*. 2012; 39:41-49.
9. Fitriani S. Pengaruh Pemberian Infusa Herba Ciplukan (*Physalis angulate* L.) Terhadap Kadar Kolesterol Total Pada Tikus Putih Jantan Wistar Yang Diberi Diet Lemak Tinggi. Universitas Islam Indonesia; Yogyakarta. [Naskah Publikasi], 2011.
10. Fransk NR, Pratt SC, Mallon EB, Britton NF, Sumpter DJT. Information flow, opinion polling and collective intelligence in house-hunting social insects. *PTRSL*. 2002; 357:1567-1583.
11. Hadisoelilo S, Kuntadi. Kearifan Tradisional dalam Budidaya Lebah Hutan (*Apis dorsata*). Departemen Kehutanan. Badan Penelitian dan Pengembangan Kehutanan. Pusat Penelitian dan Pengembangan Hutan dan Konservasi Alam. Bogor. ISBN. 2007; 978(979)3145-389.
12. Hargono D. *Sediaan Gelanik*. Departemen Kesehatan Republik Indonesia, Jakarta, 1986.
13. Hegazi AG. Propolis an overview. *J Bee Informed*. 1998; 5:22-28.
14. Heldt J, D Heldt. *Plant biochemistry*. Elsevier, London, 2005.
15. Hepburn R, Radloff SE. *Honeybees of Asia*. New York (US). Springer-Verlag Berlin Heidelberg, 2011.
16. Hernasari. Efek Antihiperlipidemia Ekstrak Etanol Daun Alpukat (*Persea Americana* Mill) Pada Tikus Putih Jantan Yang Diberi Diit Tinggi Kolesterol Dan Lemak. Universitas Indonesia: Jakarta, 2010.
17. Kahono S, Nakamura K, Amir M. Seasonal msigration and colony behavior of the tropical honeybee *Apis dorsata* F. (Hymenoptera: Apidae). *Treubia*. 1999; 31(3):283-297.
18. Karim SF. Uji Aktivitas Infusa Daun Srikaya (*Annona squamosal* L.) Terhadap Penurunan Kadar Asam Urat Dalam Darin Mencit (*Mus Musculus*). Universitas Islam Negeri Alaudin Makassar. [Skripsi], 2014.
19. Kumazawa S, Hamasaka T, Nakayama T. Antioxidant



- activity of propolis of various geographic origin. *Food Chemistry*. 2004; 84:329-339.
20. Manach C, Scalbert A, Morand C, Remesy L, Jimenez L. Polyphenols food sources and bioavailability. *Am J Clin Nutr*. 2004; 79:727-47.
  21. Mead D. A guide to some bees and wasps of Indonesia. Sulang Language Data and Working Papers: Topics in Lexicography, no. 11. Sulawesi Language Alliance. <http://sulang.org/>, 2013.
  22. Mokusuli YS. Karakter Morfologi, Sumber Pakan dan Bioaktivitas farmakologis Racun lebah madu endemic Sulawesi *Apis dorsata* Binghami dan *Apis nigrocincta* Smith (Hymenoptera: Apidae). [Disertasi]. Program Pascasarjana Universitas Sam Ratulangi, 2013.
  23. Mokusuli YS, Pelealu J, Tulung M, Mandey LC. Pharmacological Bioactivity Honey Bee Venom *Apis nigrocincta* Smith and *A. dorsata* Binghami Endemic to North Sulawesi. *International Journal of Science and Engineering Investigations*. 2013; 2(18):25-33.
  24. Mokusuli YS, Kanuang ESN, dan Manopo JS. Pengembangan Biofarmaka Antihiperlipidemia Ekstrak Sarang *Apis dorsata* Binghami Lebah Madu Endemik Sulawesi. [Laporan Penelitian DRPM]. Lembaga Penelitian Universitas Negeri Manado, 2018.
  25. Miura Yukiko, Tsuyoshi Chiba, Shinji Miura, Isao Tomita, Keizo Umegaki, Masahiko Ikeda. *et al. Green Tea Polyphenols (Flavan 3-ols) Prevent Oxidative Modification of Low Density Lipoproteins: An ex Vivo Study in Humans*. *J. Nutr. Biochem*. 2000; (11):216-222.
  26. Neumann P, Koeniger N, Koeniger G, Tingek S, Kryger P, Morits RFA. *et al. Home-site fidelity of migratory honeybees*. *Nature*. 2000; 406:474-475.
  27. Neupane KR, Woyke J, Poudel SM. Nesting site-preference and behavior of giant honey bee *Apis dorsata*. Paper presented on Apimondia, 29 September-4 October 2013, Kyiv, Ukraine and published on abstract and working procedure Apimondia, 2013.
  28. Oldroyd BP, Nanork P. Conservation of Asian honeybees. *Apidologie*. 2009; 40:296-312.
  29. Orsolich N, Jurcevic IL, Dikic D, Rogic D, Odeh Balta VD Junacovic EP. Effect of Propolis on Diet-Induced Hyperlipidemia and Atherogenic Indices in Mice. *Antioxidants*, 2019, 8, 156; doi:10.3390/antiox8060156. [www.mdpi.com/journal/antioxidants](http://www.mdpi.com/journal/antioxidants)
  30. Raffiudin R. Honey bee behavioural evolution and itpr gene structure studies. [PhD Thesis]. James Cook University <http://eprints.jcu.edu.au/1249>, 2002.
  31. Raffiudin R, Crozier RH. Phylogenetic analysis of honeybee behavioral evolution. *MPE*. 2007; 43:543-552.
  32. Rumanti RT. Efek Propolis Terhadap Kadar Kolesterol Total Pada Tikus Model Tinggi Lemak. *Journal Kesehatan Masyarakat*. 2007; 11(1):17-22.
  33. Ruttner F. *Biogeography and Taxonomy of Honeybees*. New York (US). Springer-Verlag Berlin Heidelberg, 1988.
  34. Sakagami FS, Matsumara T, Ito K. *Apis laboriosa* in Himalaya, the little known world largest honeybee (Hymenoptera: Apidae). *Insect Matsum*. 1980; 19:47-77.
  35. Sawaya ACHF, Calado JCP, Santos LCDS, Marcucci MC, Akatsu IP, Soares AEES. *et al. Composition and antioxidant activity of propolis from three species of Scaptotrigona stingless bees*. *Journal of ApiProduct and ApiMedical Science*. 2009; 1(2):37-42 (2009). DOI 10.3896/IBRA.4.01.2.03
  36. Seeley TD. *Honeybee Ecology A Study of Adaptation in Social Life*. Princeton University Press. Princeton, New Jersey, United Kingdom, 1985.
  37. Starr CK, Schmidt PJ, Schmidt JO. Nest site-preferences of the giant honey bee, *Apis dorsata* (Hymenoptera: Apidae), in Borneo. *Pan Pasific Entomol*. 1987; 63(1):37-42.
  38. V, Chris. Makalah Tentang Lebah Madu [https://www.academia.edu/27562526/makalah\\_tentang\\_lebah\\_madu](https://www.academia.edu/27562526/makalah_tentang_lebah_madu). (Diakses tanggal 28 Maret, 2018).
  39. Wijaya A. Patogenesis Hiperlipidemia. *Forum Diagnostikum No 5/*, 1993.
  40. Zhu Qin Yan, Yu Huang, Zhen-Yu Chen. *Interactions between Flavonoids and  $\alpha$ -Tocopherol in Human Low Density Lipoprotein*. *J. Nutr. Biochem*. 2000; (11):14-21.

# The antihyperlipidemic activity of Apis dorsata Binghami nesting extract in atherogenic diet- induced hyperlipidemic rats

## ORIGINALITY REPORT

13%

SIMILARITY INDEX

8%

INTERNET SOURCES

7%

PUBLICATIONS

5%

STUDENT PAPERS

## PRIMARY SOURCES

1	<a href="http://www.entomoljournal.com">www.entomoljournal.com</a> Internet Source	3%
2	<a href="http://www.pharmanest.net">www.pharmanest.net</a> Internet Source	1%
3	<a href="http://pt.scribd.com">pt.scribd.com</a> Internet Source	1%
4	Submitted to iGroup Student Paper	1%
5	C Retnaningsih, V K Ananingsih, Meiliana, E N Anggraeny, I M Cahyani, B Nugraheni, R Efendi. " The Effect of (Burm.f.) Lindau Water Fraction Addition on Hypoglycemia ", IOP Conference Series: Earth and Environmental Science, 2019 Publication	1%
6	Submitted to University of Hong Kong Student Paper	1%
7	<a href="http://az.wikipedia.org">az.wikipedia.org</a>	

<1%

8

[bmccancer.biomedcentral.com](http://bmccancer.biomedcentral.com)

Internet Source

<1%

9

Tamir, . "Z", Functional Foods and Nutraceuticals, 2005.

Publication

<1%

10

[www.oncotarget.com](http://www.oncotarget.com)

Internet Source

<1%

11

Siti Nur Arifah, Betty Lukiati, Sri Rahayu Lestari. "Potency of single garlic oil from Indonesian tropical plant in high fat diet-induced hyperlipidemia mice", AIP Publishing, 2018

Publication

<1%

12

Submitted to Sriwijaya University

Student Paper

<1%

13

[www.faunajournal.com](http://www.faunajournal.com)

Internet Source

<1%

14

[lrrd.org](http://lrrd.org)

Internet Source

<1%

15

[hal.archives-ouvertes.fr](http://hal.archives-ouvertes.fr)

Internet Source

<1%

16

[link.springer.com](http://link.springer.com)

Internet Source

<1%



17

[azdoc.site](http://azdoc.site)

Internet Source

&lt;1%

18

[health21initiative.org](http://health21initiative.org)

Internet Source

&lt;1%

19

Nada Oršolić, Irena Landeka Jurčević, Domagoj Đikić, Dunja Rogić et al. "Effect of Propolis on Diet-Induced Hyperlipidemia and Atherogenic Indices in Mice", *Antioxidants*, 2019

Publication

&lt;1%

20

Hwan S Jang. "Effects of propofol administration rates on cardiopulmonary function and anaesthetic depth during anaesthetic induction in rats", *Veterinary Anaesthesia and Analgesia*, 05/2009

Publication

&lt;1%

21

Submitted to University of Wales Institute, Cardiff

Student Paper

&lt;1%

22

Submitted to King's College

Student Paper

&lt;1%

23

MENTARI AMENDA SAPUTRI, HERIN SETIANINGSIH. "Pengaruh Pemberian Ekstrak Rumput Laut Merah (*Kappaphycus alvarezii*) terhadap Kadar LDL Pada Tikus Putih (*Rattus Norvegicus*) Jantan Galur Wistar Yang Diberi Diet Tinggi Lemak", *Hang Tuah Medical journal*,

&lt;1%

2018

Publication

24

Muhtadi, Muhtadi, Haryoto Haryoto, Tanti Azizah, Andi Suhendi, and Khong Yen. "Antidiabetic and antihypercholesterolemic activities of Citrus sinensis peel: in vivo study", National Journal of Physiology Pharmacy and Pharmacology, 2015.

Publication

<1%

25

Bakhashwain , Amal Salem Ahmad. "The Antidiabetic Effect of Nigella Sativa and Propolis on Streptozotocin-Induced Diabetes and Diabetic Nephropathy in Male Rats = تأثير مضاد السكري لحبة البركة والعكبر على ذكور الجرذان المصابة بالسكري", King Abdulaziz University : Scientific Publishing Centre, 2016

Publication

<1%

26

[diginole.lib.fsu.edu](http://diginole.lib.fsu.edu)

Internet Source

<1%

Exclude quotes Off

Exclude matches Off

Exclude bibliography On